

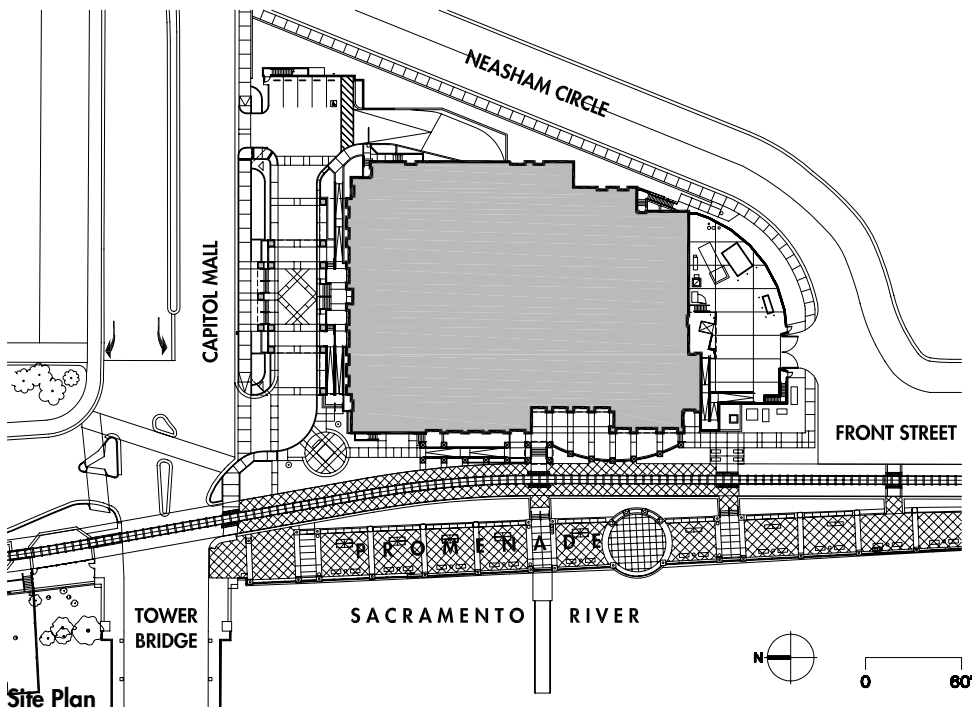
EMBASSY SUITES RIVERFRONT PROMENADE



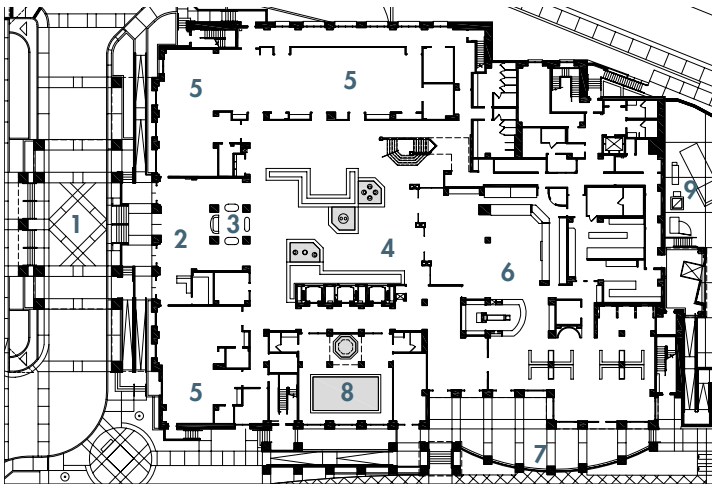
111 Scripps Drive, Sacramento, CA 95825
P: 916.972.0131 F: 916.481.1845

MFDB Architects, Inc. provided full A/E services for the Embassy Suites Hotel at the Riverfront Promenade. The \$30 million, 8-story, 242-suite property is located along the City's new riverfront development, south of the Tower Bridge.

The hotel faces the river, with a vehicle entrance on Capitol Mall. It incorporates a rail system that originates at the California State Railroad Museum in Old Sacramento that transports passengers along the river in vintage steam trains. ➔



111 Scripps Drive, Sacramento, CA 95825
 P: 916.972.0131 F: 916.481.1845

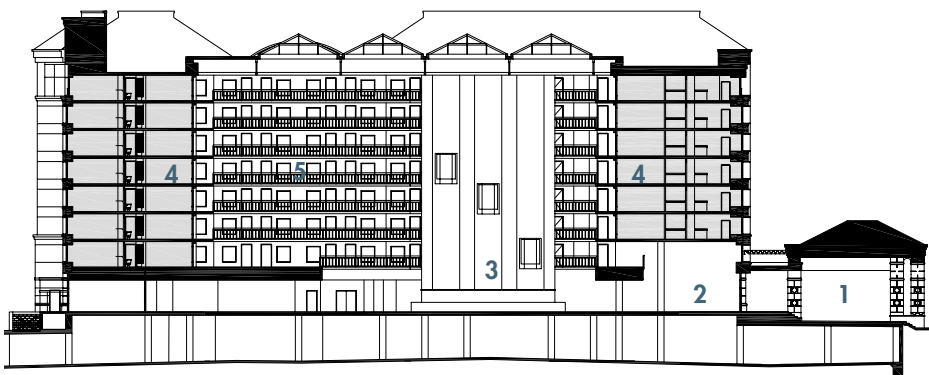


- 1. Porte Cochere
- 2. Lobby
- 3. Registration
- 4. Atrium
- 5. Meeting Rooms
- 6. Dining
- 7. Patio
- 8. Pool Area
- 9. Service Yard

The property includes an 8-story indoor atrium, conference space, an extensive public art collection, and a restaurant with river-facing terrace seating.

Floor Plan

0 40'



Section

0 30'

- 1. Porte Cochere
- 2. Lobby
- 3. Atrium
- 4. Guestrooms
- 5. Open Corridors

