

ROSEVILLE FIRE STATION #7

111 Scripps Drive, Sacramento, CA 95825
P: 916.972.0131 F: 916.481.1845

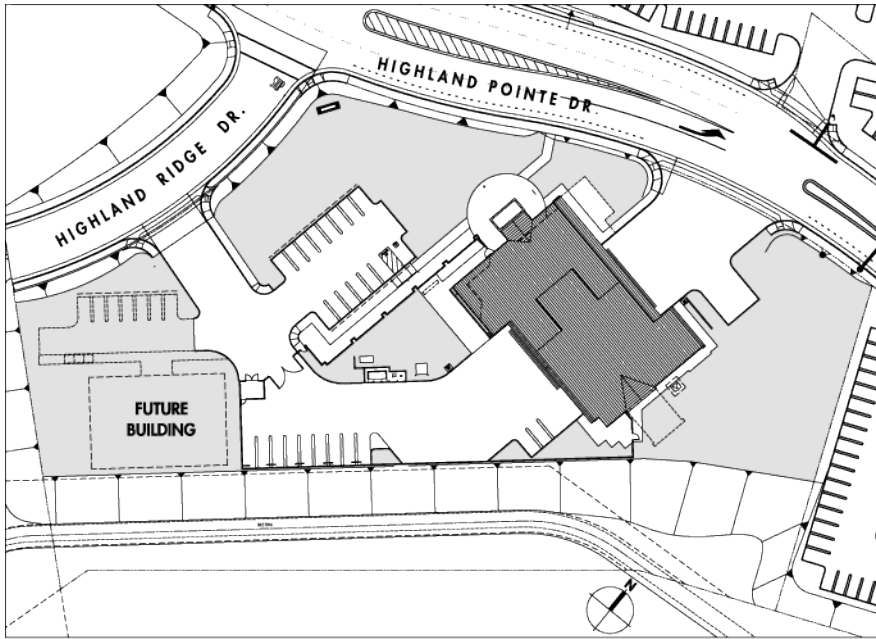


The 10,000 s.f. station serves North Central Roseville, which includes The Galleria shopping mall, numerous multifamily developments and the Highway 65 corridor. The station is home to a medium rescue apparatus and one of the City's two ladder trucks. This station is the first prototype for additional stations in the City. The program includes drive-thru apparatus bays with source-capture exhaust system, library/study, kitchen/dining area, day room, administrative offices, dorm areas, laundry/medical/decontamination room, fitness room, and shop space. The kitchen was featured in the television cooking show "America's Firehouse Chefs". →



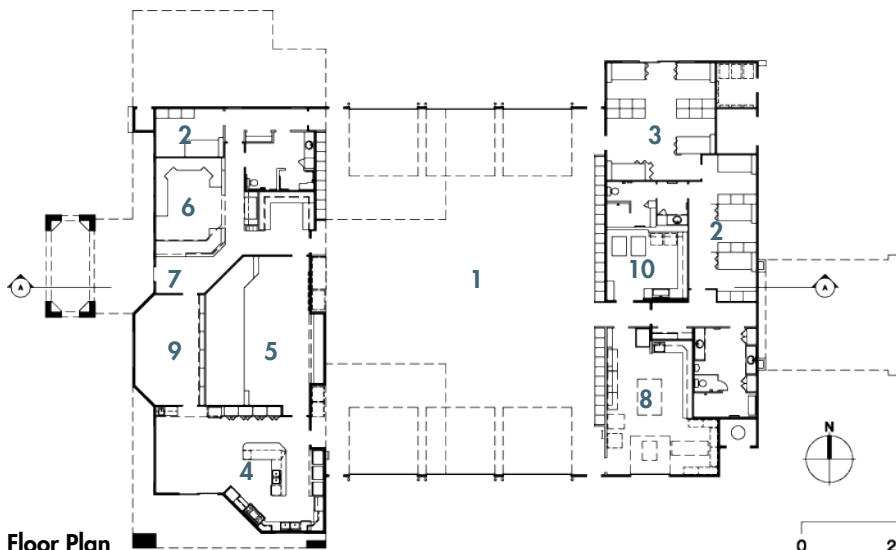
111 Scripps Drive, Sacramento, CA 95825

P: 916.972.0131 F: 916.481.1845



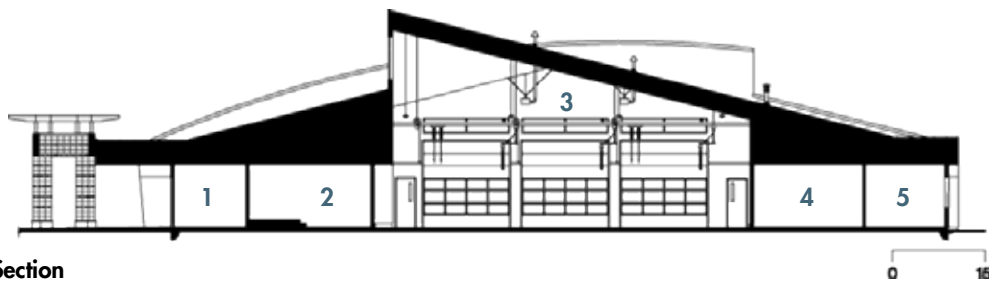
Site Plan

0 60'



Floor Plan

0 20'



Section

0 15'

- 1. Apparatus Bay
- 2. Dormitory
- 3. Fitness Room
- 4. Kitchen
- 5. Training Room
- 6. Offices
- 7. Lobby
- 8. Shop
- 9. Library
- 10. Medical Supply / Laundry

- 1. Lobby
- 2. Training Room
- 3. Apparatus Bay
- 4. Medical Supply
- 5. Dormitory

