

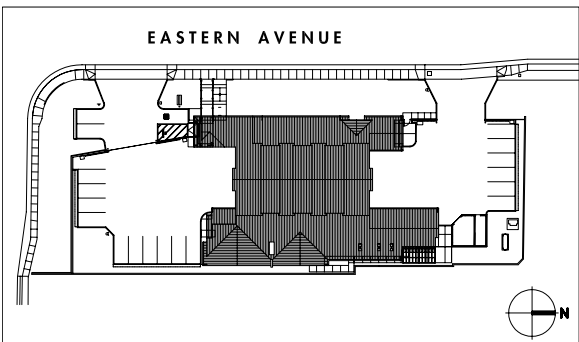
# SACRAMENTO METROPOLITAN FIRE DISTRICT STATION #110

111 Scripps Drive, Sacramento, CA 95825  
 P: 916.972.0131 F: 916.481.1845

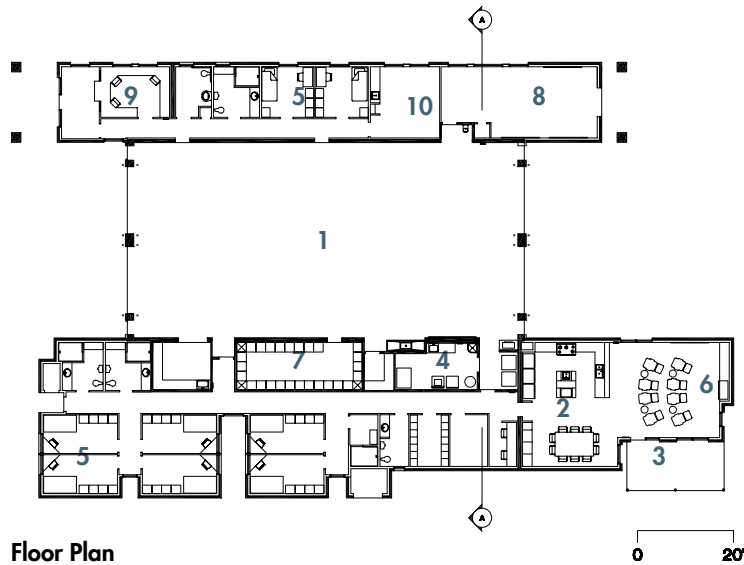


Station #110 is one of a 9,000 sf 2-bay, 8-person station prototype with multi-purpose / community room, dormitories, fitness room, kitchen / dayroom and offices. The prototype will be developed in multiple locations as replacement stations for existing facilities and for new stations in growing areas of Sacramento County and Rancho Cordova. Station #110 serves the Arden Park neighborhood of Sacramento County. →

- 1. Apparatus Bay
- 2. Kitchen
- 3. Patio
- 4. Laundry
- 5. Dormitory
- 6. Dayroom
- 7. Turnout storage
- 8. Workout Room
- 9. Offices
- 10. Conference Room



Site Plan



Floor Plan

111 Scripps Drive, Sacramento, CA 95825

P: 916.972.0131 F: 916.481.1845



- 1. Radio Room
- 2. Vestibule
- 3. Apparatus Bay
- 4. Workout Room