

ROSEVILLE FIRE STATION #6

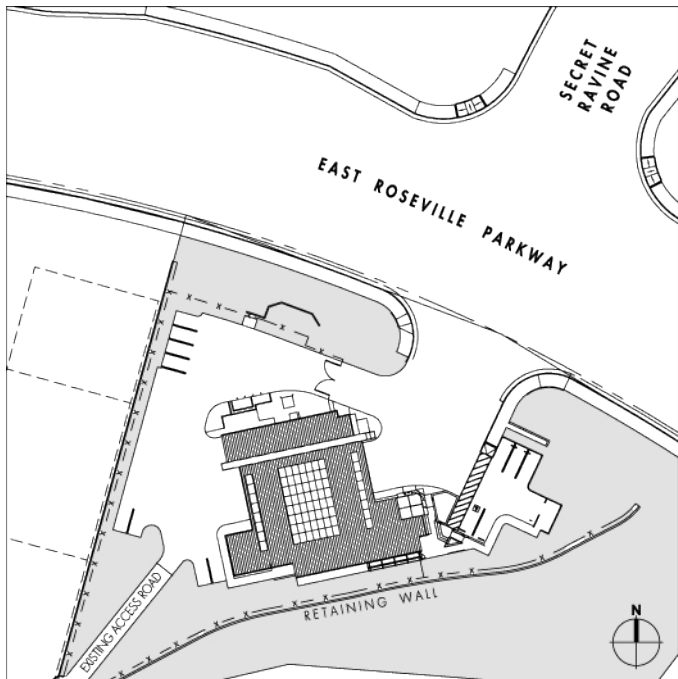
111 Scripps Drive, Sacramento, CA 95825
 P: 916.972.0131 F: 916.481.1845



The City of Roseville contracted with MFDB Architects, Inc. to design a 7,500 square foot fire station. The station includes drive-thru apparatus bays with source-capture exhaust system, library/study, kitchen/dining area, day room, administrative offices, dorm areas, laundry/medical/decontamination room, fitness room, and shop space.

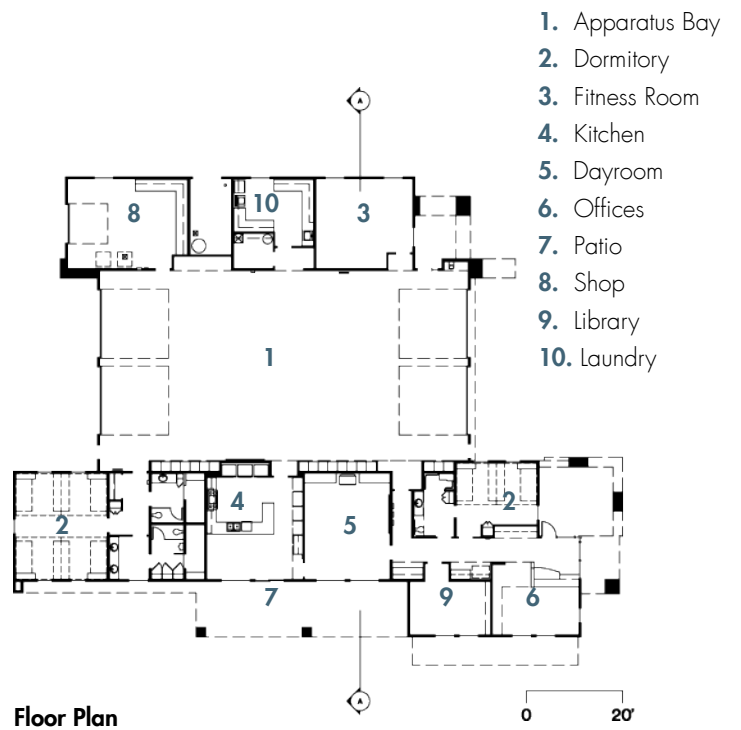


The Project includes rooftop mounted photovoltaic panels which generates 22 kilowatts of electricity into the Roseville Transmission Grid. The power supplied is capable of satisfying the energy requirements of three average homes each year. →



Site Plan

0 60'



Floor Plan

0 20'

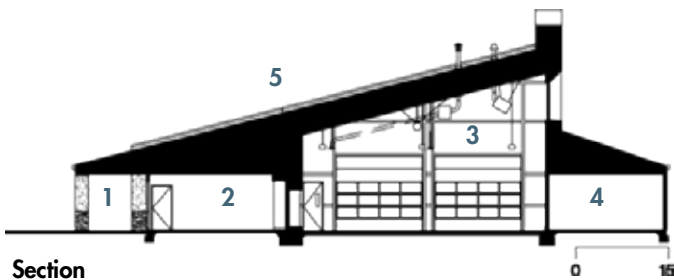


111 Scripps Drive, Sacramento, CA 95825

P: 916.972.0131 F: 916.481.1845



The Fire station is situated on a steep sloping site overlooking the Miner's Ravine trail. The project presented a unique challenge in optimizing land use for a functioning station.



- 1. Patio
- 2. Day Room
- 3. Apparatus Bay
- 4. Fitness Room
- 5. Photovoltaic array

Section