

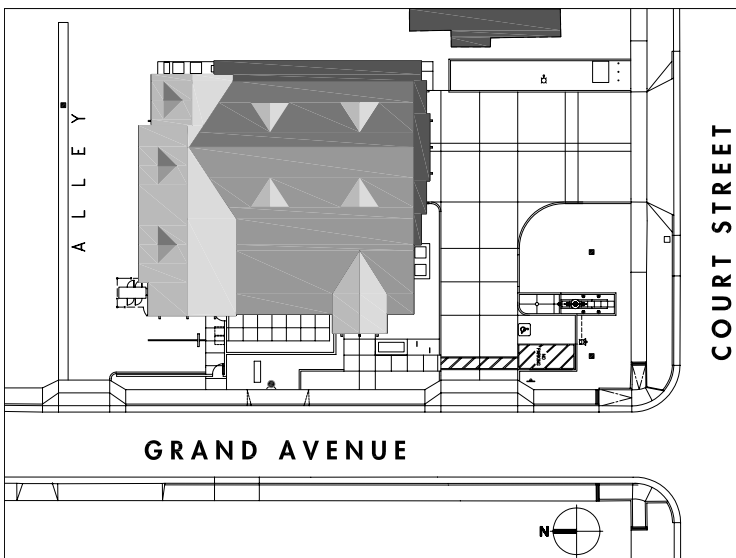
WOODLAND FIRE STATION #1



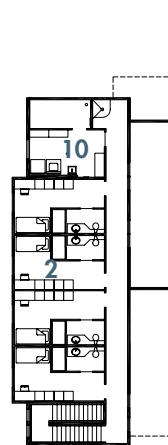
111 Scripps Drive, Sacramento, CA 95825
 P: 916.972.0131 F: 916.481.1845

This 6,500 square foot 2-bay fire station is a replacement facility for the historic fire station in central Woodland. The station is designed to be compatible with its neighbors in a historic bungalow community. Features include tuck-under parking, firefighter's pole, day room/kitchen/dining area, administrative offices, dorm areas, laundry, medical storage, and workout room. ➔

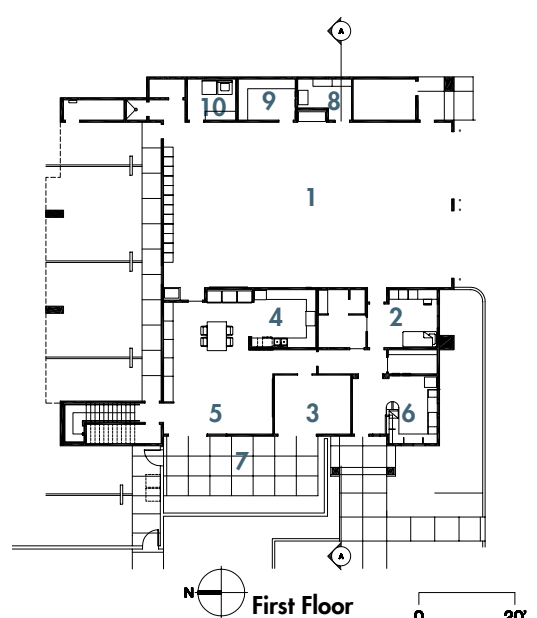
1. Apparatus Bay
2. Dormitory
3. Workout Room
4. Kitchen
5. Dayroom
6. Offices
7. Patio
8. Medical
9. Work Room
10. Laundry



Site Plan



Second Floor



First Floor

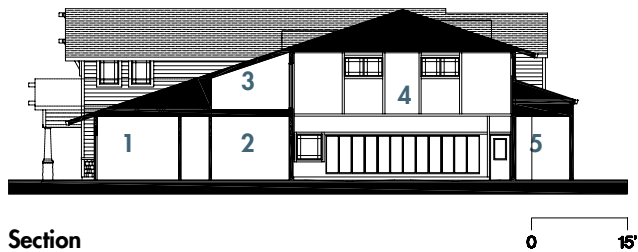


111 Scripps Drive, Sacramento, CA 95825

P: 916.972.0131 F: 916.481.1845



An antique brass bell was transferred from the historic fire station and is incorporated in the new monument sign/flag pole.



1. Workout Room
2. Bath
3. Mechanical Platform
4. Apparatus Room
5. Medical